

# CERTIFICATE OF LOCATION OF GOVERNMENT CORNER

EAST QUARTER Corner of Section 16, Township 105 N, Range 41 W, 5<sup>th</sup> P.M.

STATE OF MINNESOTA, County of MURRAY

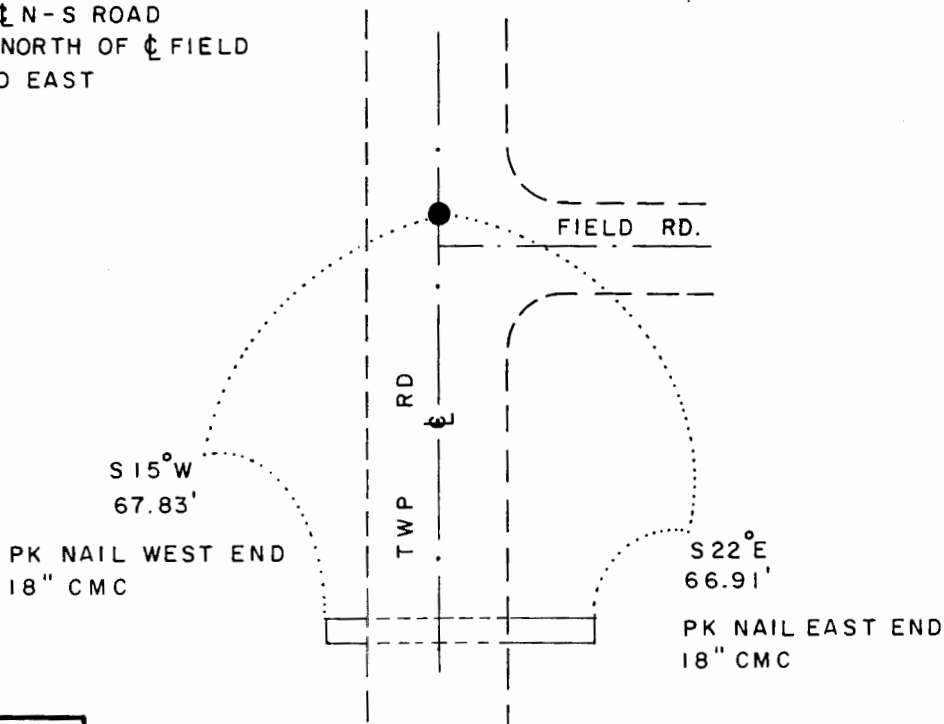
At the corner location shown on the sketch

- On \_\_\_\_\_ found a \_\_\_\_\_
- left monument as found,  lowered monument,  removed monument (explain)
- On 4-17-90 placed a 1 1/4" x 1 1/4" x 20" PERFORATED STEEL TUBE WITH ALUMINUM CAP STAMPED "DNR SURVEY MARKER", DOWN 0.3'

### SKETCH OF REFERENCE TIES



NOTE:  
MONUMENT IS  
ON  $\text{C}$  N-S ROAD  
4.7' NORTH OF  $\text{C}$  FIELD  
ROAD EAST



1983 MURRAY COUNTY  
COORDINATE SYSTEM  
N = 118,619.088  
E = 500,700.476

#### BEARINGS OBSERVED WITH COMPASS

Statement of evidence relative to this corner location is on back of page

J.B.M. 4-26-90  
WMA 1488

I hereby certify that this document and the data contained herein was prepared by me or under my direct supervision.

Lowell R. Pommeroy 5-10-90  
SIGNATURE DATE

Registration No. 17005

- Land Surveyor,  Professional Engineer
- County Surveyor,  County Engineer

OFFICE OF THE COUNTY RECORDER  
County of \_\_\_\_\_

I hereby certify that this document was filed in the Co. Recorders office at \_\_\_\_\_ M. on the \_\_\_\_\_ day of MAY 16 1990 A.D., 19 \_\_\_\_\_

County Recorder James V. Johnson

By \_\_\_\_\_, Deputy

DOCUMENT NO. \_\_\_\_\_

East Quarter Corner of Section 16, Township 105 North, Range 41 West

The DNR Bureau of Engineering contacted the following for survey information:

Secretary of State's Office  
Murray County Recorder's Office  
Murray County Highway Engineer's Office  
Bell Surveying, Inc., of Worthington  
Madsen Land Surveying of Fairmont

- 1861 U.S. General Land Office notes obtained from the Secretary of State's Office show corner marked with a post in a mound with trench and pits as per instructions.
- 1898 Surveyor's Record Book A, page 76, obtained from the County Recorder's Office contains a survey by J. W. Woolstencroft. Survey shows a government mound and stake at corner. The corner is shown:  
2660 feet from the northeast corner of Section 16  
Survey also shows that a 12" by 12" by 20" stone was set at the center of Section 16.
- 1901 Surveyor's Record Book A, page 154, obtained from the County Recorder's Office contains a survey by J. W. Woolstencroft. Survey shows a government stake in mound at corner.
- 1936 Surveyor's Record Book obtained from the County Highway Engineer's Office shows corner but a description of a monument is not given. The following ties are shown to corner:  
tack in corner fence post, northeast, 33.6 feet  
tack in blazed fence post, 40.6 feet  
stone 15 feet south of east-west fence
- 1990 March, DNR Bureau of Engineering hired Rod Spartz of Iona to dig for evidence of corner. A 12.5 foot by 8.5 foot by 5 foot deep hole was dug with a backhoe, the center being 2660 feet south of the northeast corner of Section 16 and on the center line of a north-south road. No evidence of a monument was found in excavation. In digging, an old road bed was found down 2.5 feet and natural ground was encountered down 3.5 feet.

Searched for but found no evidence of the record ties.

Visited the area of the center of Section 16 and found a 12" diameter wood corner fence post with fences north, south and west. Numerous field stones were found piled around the corner fence post therefore did not search for stone set in 1898.

Then computed a position for the east quarter corner of Section 16 as follows:

on the easterly extension of a line from the west quarter corner of Section 16 through the corner fence post found in the area of the center of Section 16 and on line between the southeast and northeast corners of Section 16

The computed position was found to be:

on the center line of a north-south road  
2662.32 feet from the northeast corner of Section 16  
2641.67 feet from the northeast corner of Section 21  
10.32 feet south of the computed lost position for corner

Analysis of the above information led the DNR Bureau of Engineering to conclude that the computed position for corner marks its location.